

E.S.J. van Dam Ltd - Canada Revenue stamp specialist since 1970 - P.O. Box 300, Bridgenorth, ON., Canada, K0L 1H0

All items offered subject unsold. Payment with order - Visa, Mastercard or check. Applicable tax extra in Canada.

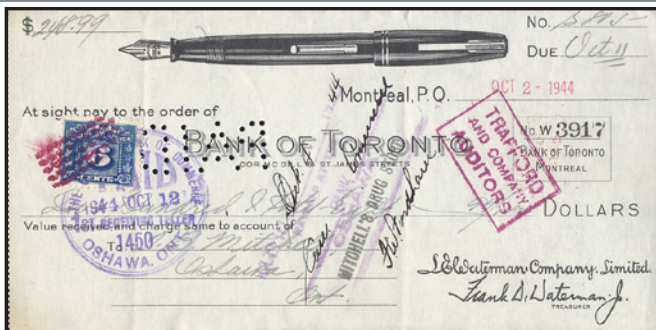
North America - **FREE SHIPPING**, unless noted otherwise. All other countries \$3 shipping, which is ±½ or less of my actual cost.

Email your order to: erlingvandam@gmail.com or news@canadarevenuestamps.com

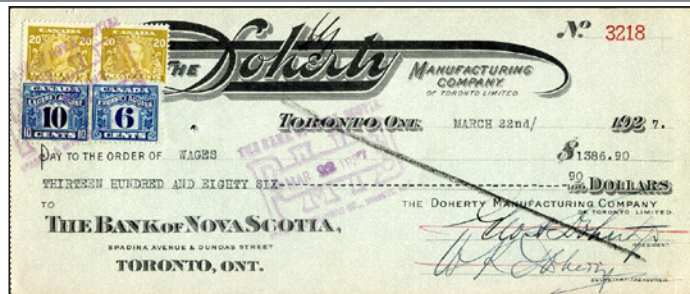
phone 1-705-292-7013. Toll free phone - North America 1-866-382-6326.

Minimum order \$25 - SATISFACTION GUARANTEED

Currently Canadian \$100 = approximately US\$80. Credit cards are processed in Cdn\$



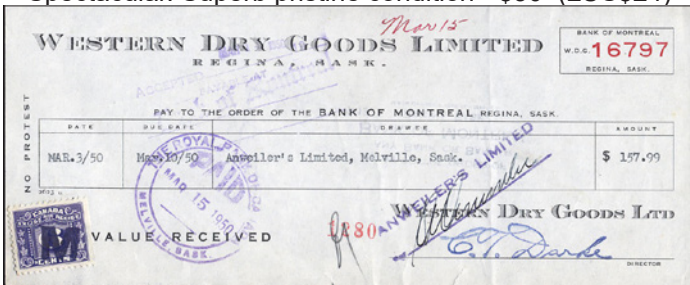
1944 - FX67 - 6c blue excise tax on very attractive fancy Rarely seen Waterman company cheque - - \$12.50 (±US\$10)



Attractive 1927 \$1386.90 Toronto check. 56c tax paid with 2 different revenue issues affixed - \$12.50 (±US\$10)



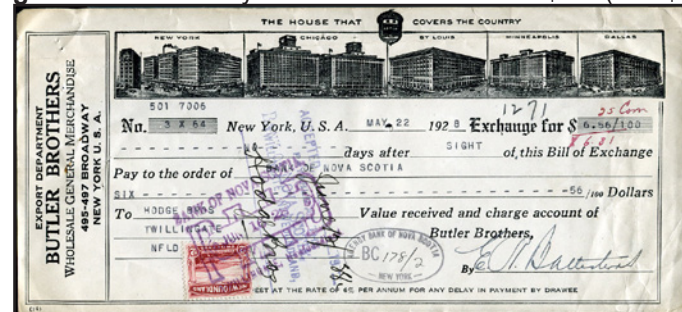
Lillooet, B.C. early 191.. Official Cheque Province of British Columbia drawn on the Bank of British North America. Spectacular. Superb pristine condition - \$30 (±US\$24)



Very unusual - Regina 1950 note with FX68 - 6c purple with large "M" cancel. Only such item I have seen - \$25 (±US\$20)



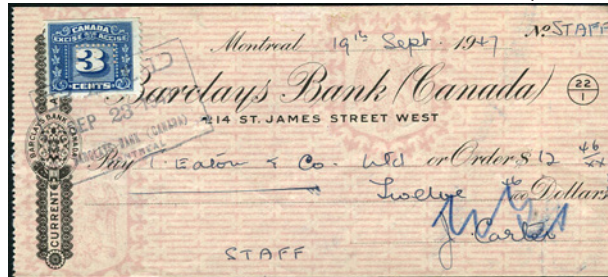
1948 Bank of Montreal - very unusual check drawn on American Express Company, Hong Kong. The proper amount of Canadian excise tax was paid at 3c with FX64 - 3c blue. When the check was cashed in Hong Kong the tax was paid with 10c Hong Kong Stamp Duty tied with American Express Co, Hong Kong cancel. Numerous Chinese cancels. Rare item - \$150 (±US\$120)



1928 New York Cross Border Bill of Exchange payable to firm in Newfoundland. This was before Newfoundland was part of the Canadian Confederation, so only 2c Newfoundland tax was payable and was paid with a regular postage stamp as was normal for any countries in the British Commonwealth. I rarely see items like this. A lovely Newfoundland item - \$100 (±US\$80)



1948 Bank of Montreal - very unusual check drawn on American Express Company, Hong Kong. The proper amount of Canadian excise tax was paid at 3c with FX64 - 3c blue. When the check was cashed in Hong Kong the tax was paid with 10c Hong Kong Stamp Duty tied with American Express Co, Hong Kong cancel. Numerous Chinese cancels. Rare item - \$150 (±US\$120)



T. Eaton Co. PERFIN "E" on FX64 - 3c excise tax on complete check. This is perfin type E2. The current perfin catalogue can be downloaded for free from my website. A nice piece of Canadiana. The T. Eaton company used to be Canada's largest mail order and retail company, but is no longer in existence. Small ink spot on the right beside "dollars", check is completely intact. Perfin revenues on complete document difficult to find - \$25 (±US\$20)

Sign up to our FREE electronic mailing list on main page of our website, **be sure to confirm you subscription upon receipt of confirmation email from our website.** To ensure receipt of our email notices please add... news@canadarevenuestamp.com ... to your approved address book/contact list



1885 Weights & Measures.

FWM22//FWM32P - 9 different 1c - \$1.50 without control numbers. These are typically called unfinished stamps or proofs. All, but 50c, have original gum. Several are almost *NH. A few trivial tiny faults as is typical for this issue. Very fresh - \$275 (±US\$220)



FX107* - 1/2 on 3/20c mint block of 20. very slight gum glazing. Seldom offered in large blocks. \$50 (±US\$40)



FX108*NH - 1/2 on 3/16 *NH block of 20 Large blocks seldom seen \$70 (±US\$56)



NEWFOUNDLAND NFW1 - 10c VF*NH Block of 6. Very strong **WATERMARK** shows very clear in selvedge. Beautiful Showpiece \$375 (±US\$300)

NFR43 - \$20 used Block of 10 with light cancel. Very pretty - \$175 (±US\$140)

FX105 - 3/10 on 9/40c VF*NH corner block of 15. Seldom offered in large blocks. \$50 (±US\$40)



ST14, 14a, 14d Saskatchewan Telephone. Very interesting pane, no tab. **Watermarked + Major Plate scratch pos. #13.** \$85 (±US\$68)



FB52 - \$1 p.12 pelure paper rare multiple. VF for this \$50 (±US\$40)



1993 Ducks Unlimited Miniature sheet of 4 VF*NH - \$12.50 (±US\$10)



1994 Ducks Unlimited Miniature sheet of 4 VF*NH - \$12.50 (±US\$10)



FX110*NH - 1/2 on 9/40 *NH block of 20 Large blocks seldom seen \$75 (±US\$60)



FX111*NH - 1/2 on 3/8 *NH block of 20 Nice corner block. Large blocks seldom seen - \$80 (±US\$64)



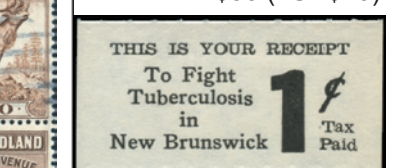
NEWFOUNDLAND NFR53 - \$20 block of 6. wrinkle at bottom and closed tear in bottom left stamp. Scarce block \$250 (±US\$200)



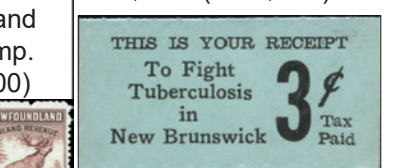
FWT9*NH - 3c WAR TAX Very fine *NH block of 6. Multiples this nice rarely seen - \$75 (±US\$60)



FWT11* - 5c WAR TAX bottom stamps *NH VF Exceptional block for this value - \$50 (±US\$40)



NBT5 NEW BRUNSWICK TOBACCO TAX. Rare with value on the right. VF unused no gum as issued \$350 (±US\$280)



NBT6 NEW BRUNSWICK TOBACCO TAX. Rare with value on the right. VF unused no gum as issued \$300 (±US\$240)



1928 Yukon Airways - CL42 - 4 different First Flight covers April 13, 1928. Atlin to Carcross, Carcross to Atlin, Whitehorse to Atlin and Whitehorse to Carcross. Very Fine and very clean covers. Unitrade Cat. \$260. My price just \$100 (±US\$80)



1928 Yukon Airways first flight Atlin to Whitehorse April 13, 1928. **CL42f - repair entry in left "2" of "25"**. Cat. \$250. Very Fine, very fresh - \$175 (±US\$140)



1928 Yukon Airways first flight Carcross to Whitehorse April 13, 1928. **CL42f - repair entry in left "2" of "25"**. Cat. \$250. Very fresh - \$175 (±US\$140)



NBT13b* - Rarely offered New Brunswick Tobacco tax - **IMPERF BETWEEN**. Wrinkle at left in stamp on left. Unused, no gum as issued. **WATERMARKED**. Cat. \$390 - \$95 (±US\$76)



QL70*NH - \$10
perf. 11 VF*NH
\$125 (±US\$100)



QL71*NH - \$20
perf. 11 VF*NH
\$245 (±US\$195)



QL72*NH - \$30
perf. 11 VF*NH
\$145 (±US\$116)



NSB12a - 20c
Rare rough perf. 12½ in exceptional condition. Very rare stamp \$375 (±US\$300)



BCL6a - 30c.
Very strong "ONA" watermark. Very nice \$75 (±US\$60)



BCL7a - 50c.
Strong "NA" watermark. Very nice \$70 (±US\$56)



Rare 1907 NFR13 - \$5
A very difficult stamp. Light document bend \$200 (±US\$160)



NFR14 - \$50
light document fold scarce stamp \$300 (±US\$240)



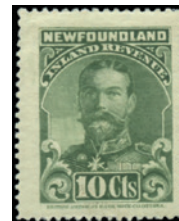
NFR15 - \$100, perf. 12
\$100 offset on reverse \$265 (±US\$212)



NFR21a - \$5 perf. 11
horizontal pair on piece with scarce "PAID" punch cancel. Very attractive specialist item. Cat. \$150+ \$100 (±US\$80)



NFR16 - 5c, perf. 11
Exceptionally nice unused copy, no gum. \$30 (±US\$24)



NFR17 - 10c, p.12
Exceptional copy with original gum, light hinge \$35 (±US\$28)



NFR17a - 10c, p. 11
unused, no gum. fresh \$15 (±US\$12)



NFR22 - \$20
"CANL'D C.S.O." perfin type cancel. Fresh \$125 (±US\$100)



NFR23 - \$25, p. 12
a very nice fresh copy of this rare value \$275 (±US\$220)



1946 - PWF6*NH
Pos. #1 with broken "o" in "of". very faint vertical natural gum bend. \$35 (±US\$28)



NSC24a - \$1
vertical pair with wide gutter spacing variety. Cat \$44 - \$30 (±US\$24)